

# Prestige Renal Care Journey

A Premium Vacation with Global Standard Dialysis



## Program B: 3 Days 2 Nights

### Day 1

- 10.00 Meet up at **The St. Regis Bangkok**
- 10.30 Elevate Your Well-Being at **Bangkok LIFE Longevity & Biohacking Hub**. Step into a world of ultimate rejuvenation at a premier luxury wellness destination, perched high on the 15th floor of the ultra-exclusive The St. Regis Bangkok on Rajadamri Road. This is the ultimate sanctuary for Biohacking enthusiasts—where cutting-edge science and state-of-the-art technology meet to optimize your body, unlock peak physical performance, and reverse aging based on precise scientific data. Your Tailored Wellness Journey includes: Singing Bowl Therapy (45 mins), Facial Treatment (60 mins), Reflexology (60 mins)
- 13.00 Immerse yourself in the vibrant heart of Bangkok's luxury shopping district. Spend your afternoon exploring the world-renowned **Central World** or the glamorous **Siam Paragon**. Whether you are looking to hunt down high-fashion labels, pick up unique souvenirs, or dive into a world-class restaurants, you have total freedom to curate your perfect afternoon. Enjoy your free time to shop and lunch at your own leisure and expense.
- 17.30 Prepare for an extraordinary dining experience at **Plu Sathorn**, a premium contemporary Thai restaurant hidden away in the charming Soi Phra Phinit (Sathorn-Suan Phlu area). Set inside a beautifully restored, lush colonial-style wooden estate, Plu serves up exceptionally bold, authentic flavors representing all 4 regions of Thailand. Its culinary excellence is proudly guaranteed by the prestigious Michelin Bib Gourmand award for multiple consecutive years!
- 20.30 Transfer you safely to **Salaya One Hotel & Service Apartment**



Bangkok Life Longevity



Bangkok Life Longevity



Central World



Plu

# Prestige Renal Care Journey

A Premium Vacation with Global Standard Dialysis



## Program B: 3 Days 2 Nights

### Day 2

8.00 Depart from **Salaya One Hotel & Service Apartment**



Elephant Showground

8.30 **Samphran Elephant Ground & Zoo** Prepare for a day of wonder at this world-renowned destination, recognized by CITES as having "one of the cleanest and most impressive public displays of crocodiles in the world," and honored as a 9th Thailand Tourism Award recipient. Spread across 60 lush, green acres, you can enjoy these spectacular highlights:

- The Elephant Theme Show: Witness incredible displays where elephants dance, play soccer, and recreate the legendary "Yutha Hathi," a historical royal battle scene.
- The Crocodile Wrestling Show: Brace yourself for heart-pounding stunts performed by master crocodile catchers that you truly have to see to believe.
- Tropical Elephant Rides: Enjoy a "chic and chill" journey through serene tree tunnels and beneath refreshing waterfalls.
- Interactive Fun: Experience the thrill of hand-feeding elephants and crocodiles yourself.



Crocodile Show

12.00 Step into **REALM Bangkok** for lunch. A trendy, highly acclaimed Thai-fusion café and restaurant on Phutthamonthon Sai 4. Get ready to indulge in a vibrant culinary journey that brings the bold, authentic flavors and rich cultural heritage of Hat Yai (Songkhla Province) straight to your plate in a stunning modern setting.



Realm Bangkok

14.00 Dialysis at the **Golden Jubilee Medical Center (GJMC)** in Salaya (operated by Mahidol University's Faculty of Medicine Siriraj Hospital) operates as the **Golden Jubilee Fresenius Kidney Care Center**. It is a premier hemodialysis facility that manages chronic kidney disease (CKD) through state-of-the-art blood filtration to remove waste and excess fluids



GJMC

# Prestige Renal Care Journey

A Premium Vacation with Global Standard Dialysis

## Program B: 3 Days 2 Nights



18.00 The Legendary Volcanic Baked Prawns. Indulge in an extraordinary dining experience at **Kung Ob Phu Khao Fai** (Volcanic Baked Prawns), a legendary Thai and seafood institution that has been a proud landmark of Nakhon Pathom for over 30 years! This iconic restaurant is famous for its one-of-a-kind signature dish: fresh, succulent prawns served under a dramatic, volcano-shaped dome that is set ablaze right at your table!

20.30 Arrive at **Salaya One Hotel & Service Apartment**

## Day 3

8.00 Depart from **Salaya One Hotel & Service Apartment**

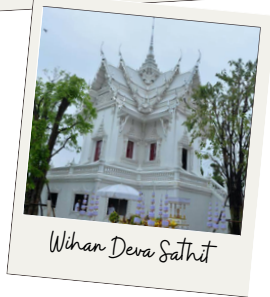
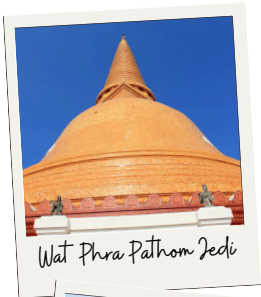
9.00 Explore two of Nakhon Pathom's most awe-inspiring sacred landmarks, located just moments from each other.

- **Phra Pathom Chedi Ratchaworawihan**

- Behold the largest and tallest golden Buddhist chedi in the entire world! \* The History: This epic monument traces its roots back to the ancient era of India's King Ashoka the Great. Centuries later, the visionary King Rama IV ordered a massive, breathtaking chedi to be built directly over the ancient original structure.
- Sacred Highlights: Pay respects to "Phra Ruang Rodjanarith," a majestic, highly revered standing Buddha statue. The base of this sacred icon also serves as the final resting place for the royal ashes of King Rama VI.

- **Devasthahit Viharn (Surapracharn Foundation)**

- Step into Nakhon Pathom's ultimate destination for spiritual seekers and "Sai Mu" (fortune/blessing) enthusiasts.



# Prestige Renal Care Journey

A Premium Vacation with Global Standard Dialysis

## Program B: 3 Days 2 Nights



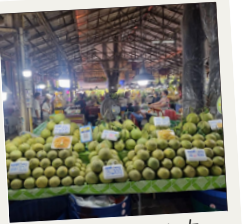
Wihan Deva Sathit



Wihan Deva Sathit



Loong Loy Pa Lan



Don Wai Market

- The Architecture: A jaw-dropping glass-mirrored pavilion built in a cross-shaped (Chaturamuk) style, meticulously designed to mimic Mount Meru—the center of the universe in Buddhist cosmology.
- The Giant 'Sedthie': Marvel at the largest bronze statue in the world of Prince Abhakara Kiartivongse (The Prince of Chumphon), standing at a towering 3.9 meters.
- Must-Do Rituals: \* Spin the Ship's Wheel: Engage in the famous ritual of turning the ship's steering wheel to symbolically pivot your destiny, flip your luck, and attract immense wealth!
  - Phra Asurin Rahu: Admire the breathtakingly beautiful sculpture of Rahu riding a Garuda.
  - Thao Wessuwan: Seek blessings from a magnificent 6-meter-tall statue of the God of Wealth, invited directly from the legendary Wat Chulamane.

12.00 Prepare your tastebuds for a legendary culinary experience at **Loong Loy Pa Lan (Uncle Loy's Wild Kitchen)**. Officially recognized and guaranteed by the world-renowned Michelin Guide, this iconic restaurant is a paradise for foodies looking to challenge their palate with fiery, authentic Thai jungle curry and local delicacies.

14.00 Dive into the bustling energy of **Don Wai Riverside Market**, a historic, vibrant trading hub sprawling along the scenic Tha Chin River. Enclosed by classic wooden architecture dating back to the reign of King Rama VI, this is an absolute foodie paradise bursting with an endless array of sweet treats, savory local snacks, and vintage charm.

17.00 Drop you off safely at your preferred destination in Bangkok

# Prestige Renal Care Journey

A Premium Vacation with Global Standard Dialysis



## Offer

Package	Price (THB)		
	1 Pax	2 to 5 Pax	over 6 Pax
A	56,610	50,460	41,840
B	66,450	59,070	52,920
C	61,530	52,300	43,690

Package	Price (USD)		
	1 Pax	2 to 5 Pax	over 6 Pax
A	1,750	1,560	1,290
B	2,050	1,820	1,630
C	1,900	1,610	1,350

- Price does not include "Dialysis" cost. The cost of Dialysis at Golden Jubilee Medical Center is THB 3,500 - 6,500 | USD 110 - 200
- Price does not include VAT 7%